



I-293 EXIT 6 & 7 (PART B)

Technical Advisory Committee (TAC)

January 30, 2019

New Hampshire
DOT
Department of Transportation



WELCOME NEW COMMITTEE MEMBERS

David Winslow – Manchester Public Works

Jonathan Golden – Manchester Planning Department

Also, Bruce Thomas is now representing Hooksett

PROJECT INPUT

Advisory Committee Meetings

Meeting # 1 – February 2016
Meeting # 2 – April 2016
Meeting # 3 – May 2016
Meeting # 4 – July 2016
Meeting # 5 – November 2016
Meeting # 6 – April 2017
Meeting # 7 – July 2017
Meeting # 8 – April 2018
Meeting # 9 – January 2019

Public Informational Meetings

Meeting # 1 – August 2016
Meeting # 2 – June 2017
Meeting # 3 – June 2018

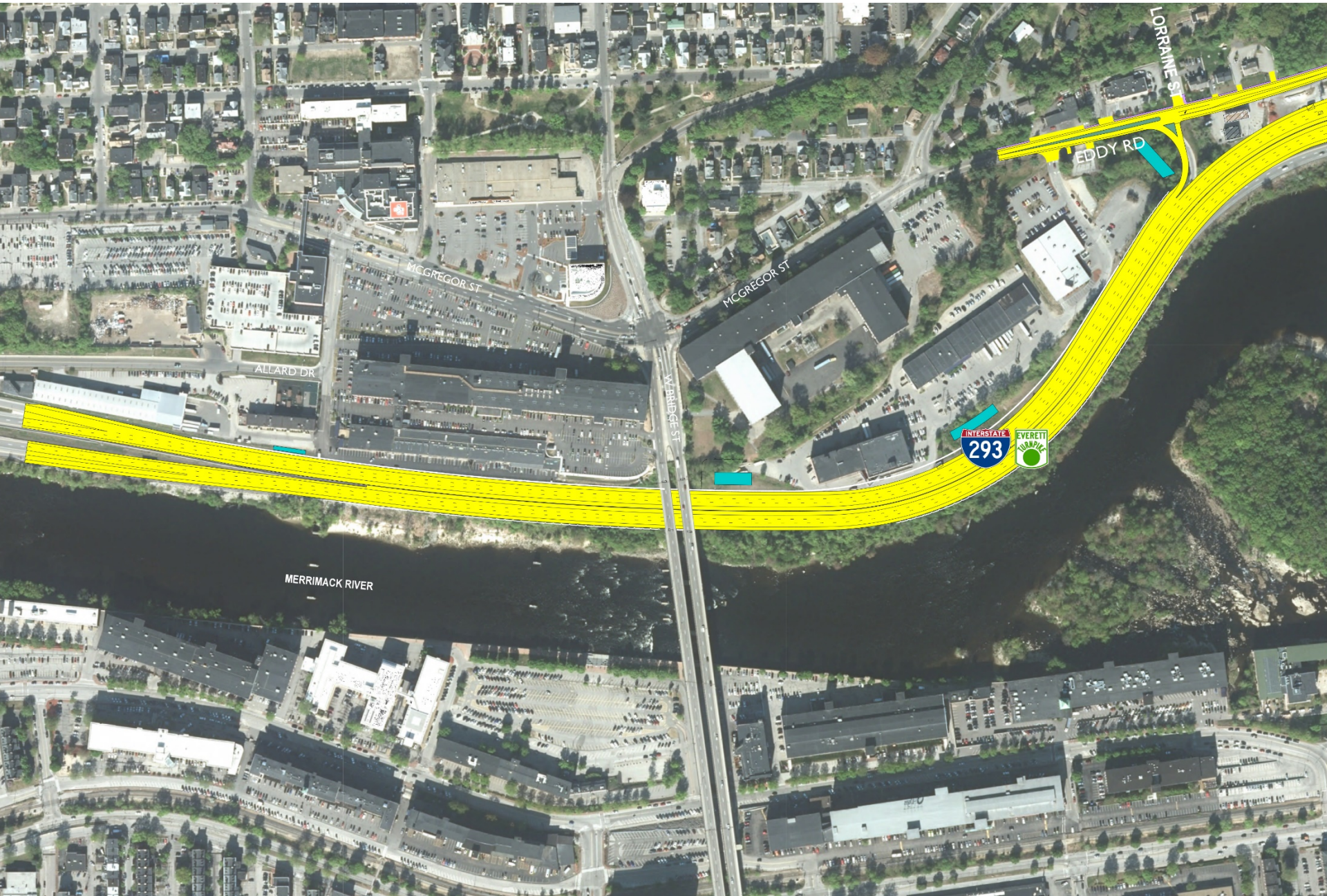
Public Officials Meetings

Manchester Community College – August 2016
Southern NH Planning Commission – September 2016
Manchester Staff – December 2016
Goffstown Staff – January 2017
Goffstown Selectmen – March 2017
Manchester Chamber Infrastructure Committee – March 2017
Manchester Mayor and City Staff – August 2017
Manchester Mayor and City Staff – February 2018

Resource Agency Meetings

Meeting # 1 – August 2016
Meeting # 2 – March 2017
Meeting # 3 – June 2017
Meeting # 4 – October 2018

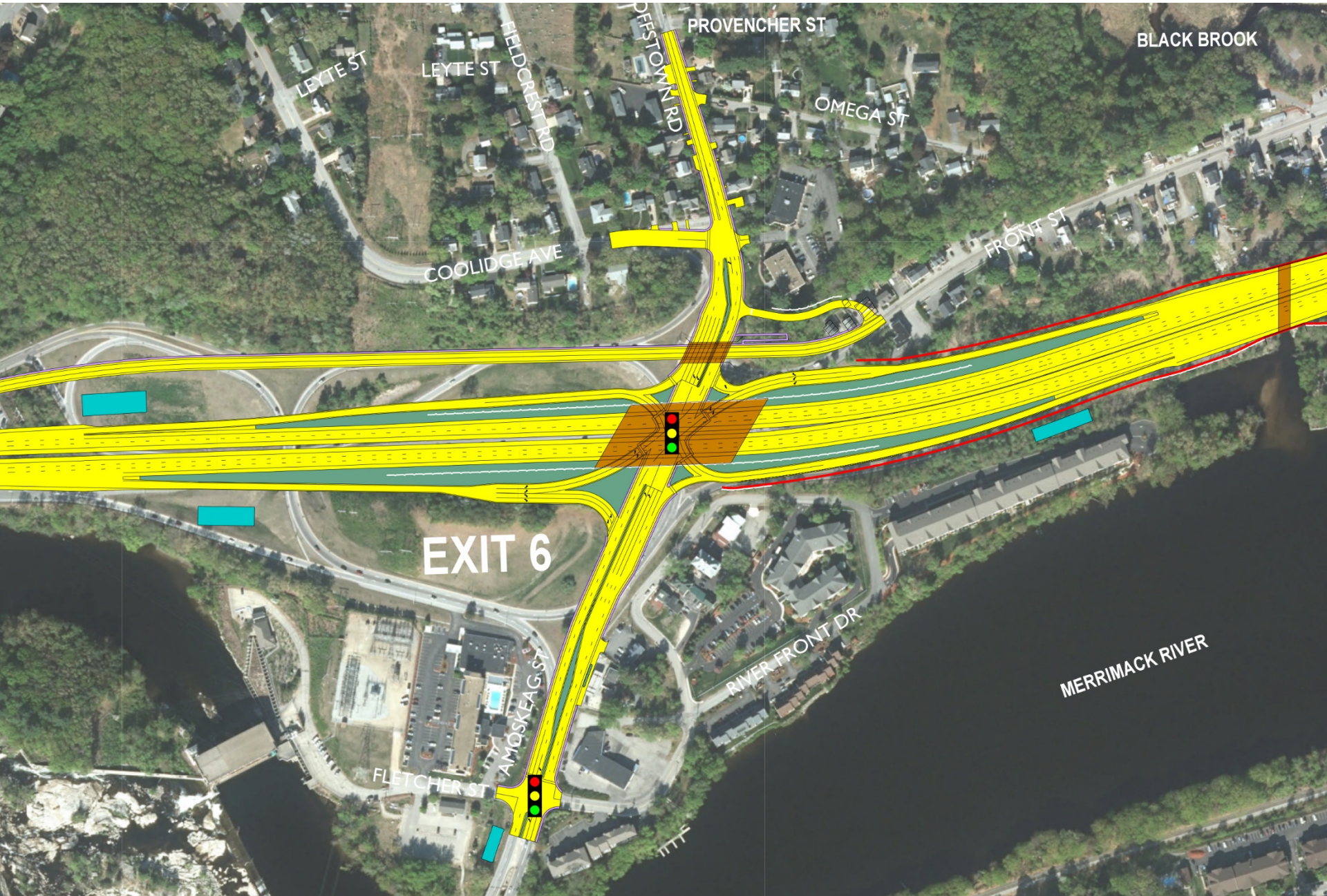
I-293 Mainline – Additional lane in each Direction



Exit 6 – SPUI



Exit 6 – SPUI



Exit 7



Exit 7



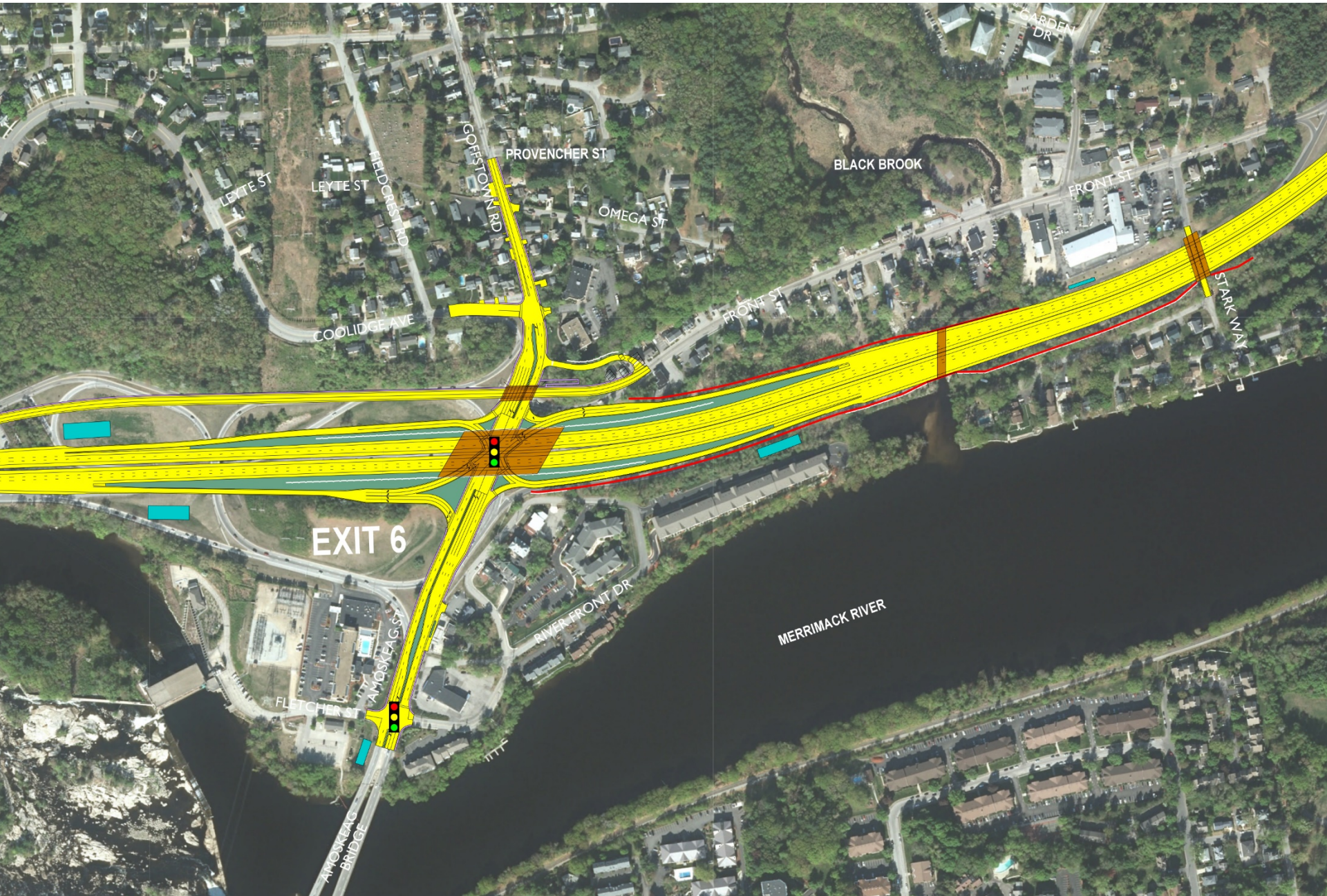
Exit 7



KEY ENVIRONMENTAL ISSUES

- Noise
- Cultural Resources
- Wetlands and Natural Resources
- Stormwater
- Manchester Landfill

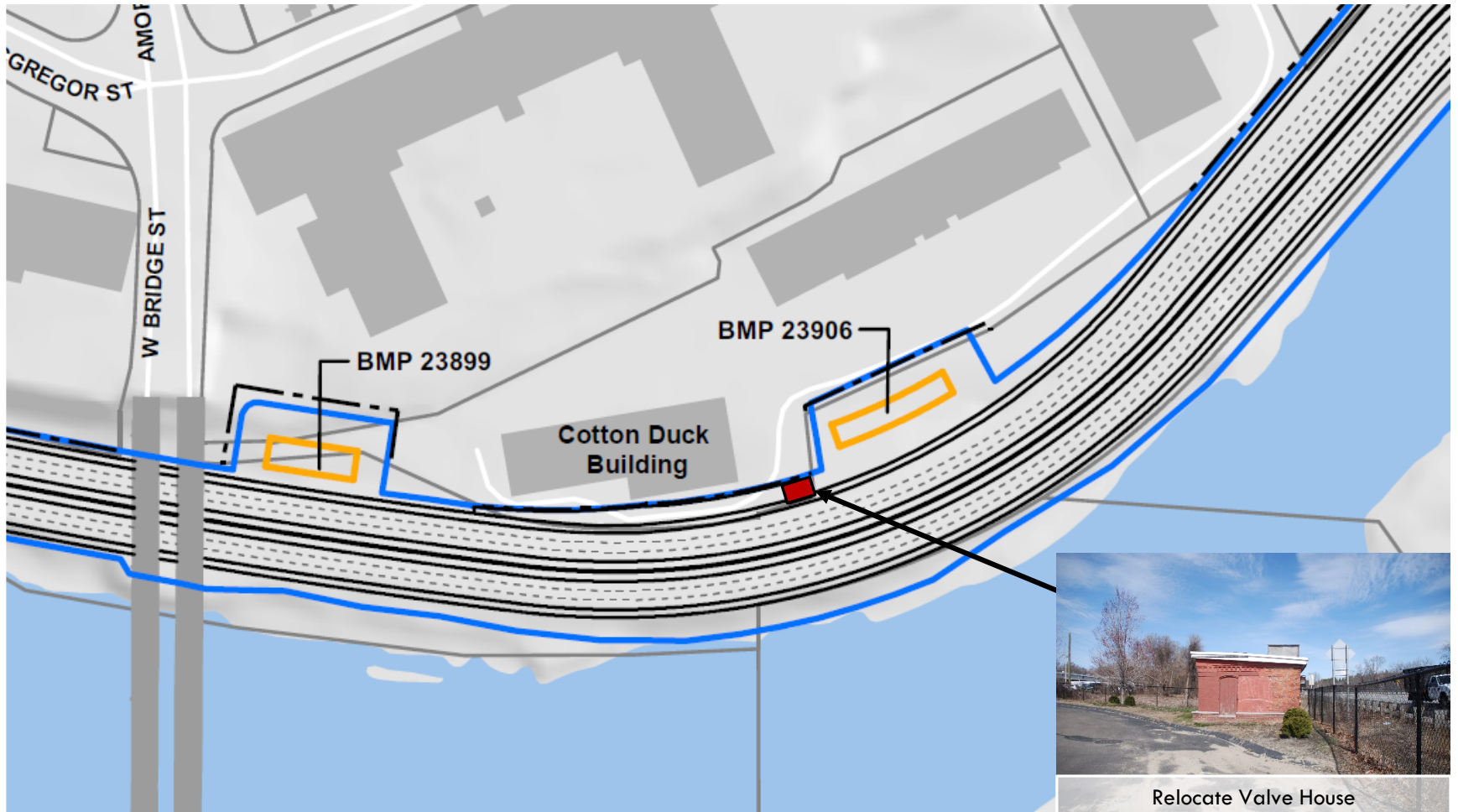
Exit 6 – Noise Barriers



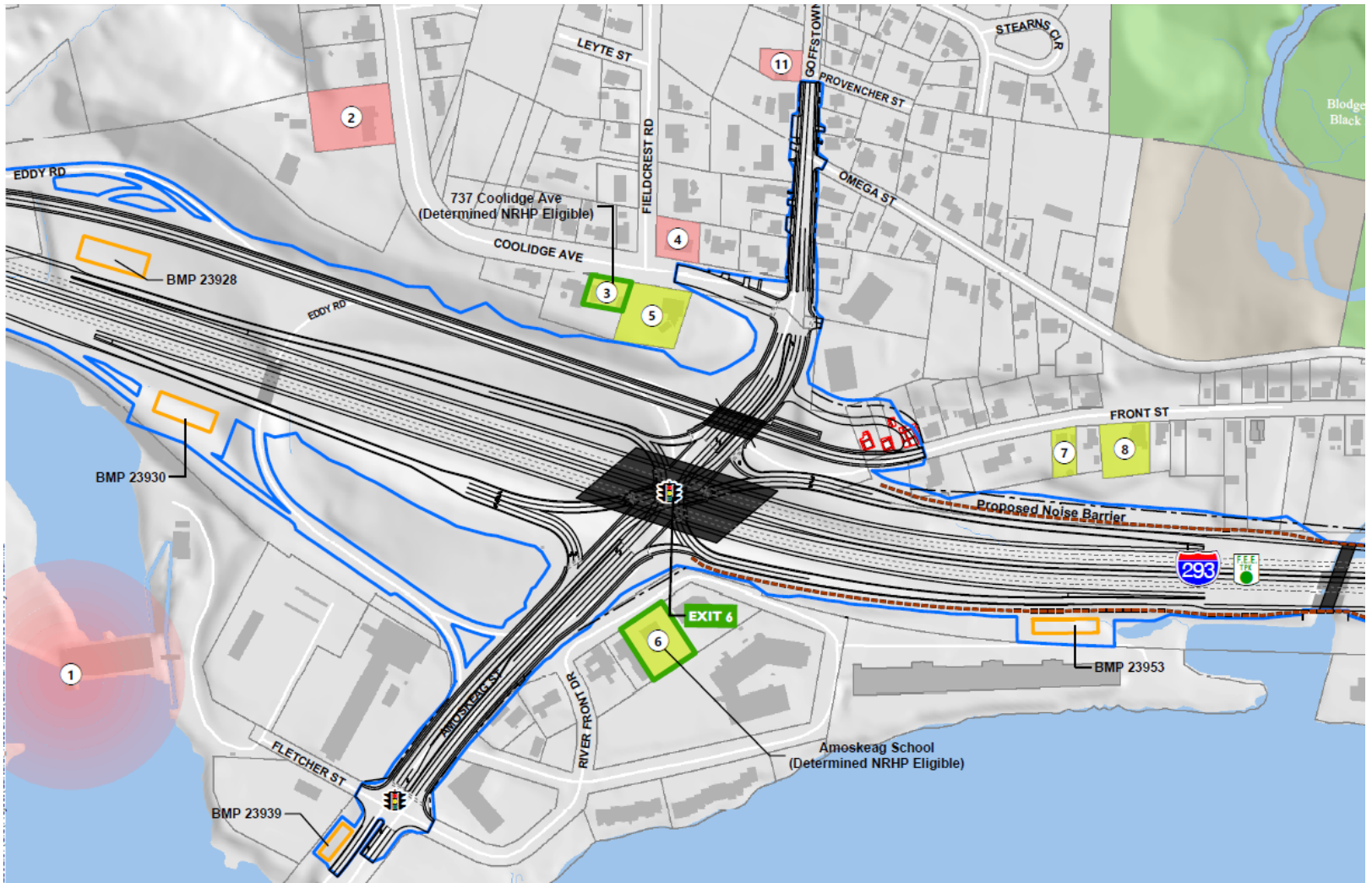
Exit 7 – Noise Barriers



CULTURAL RESOURCES

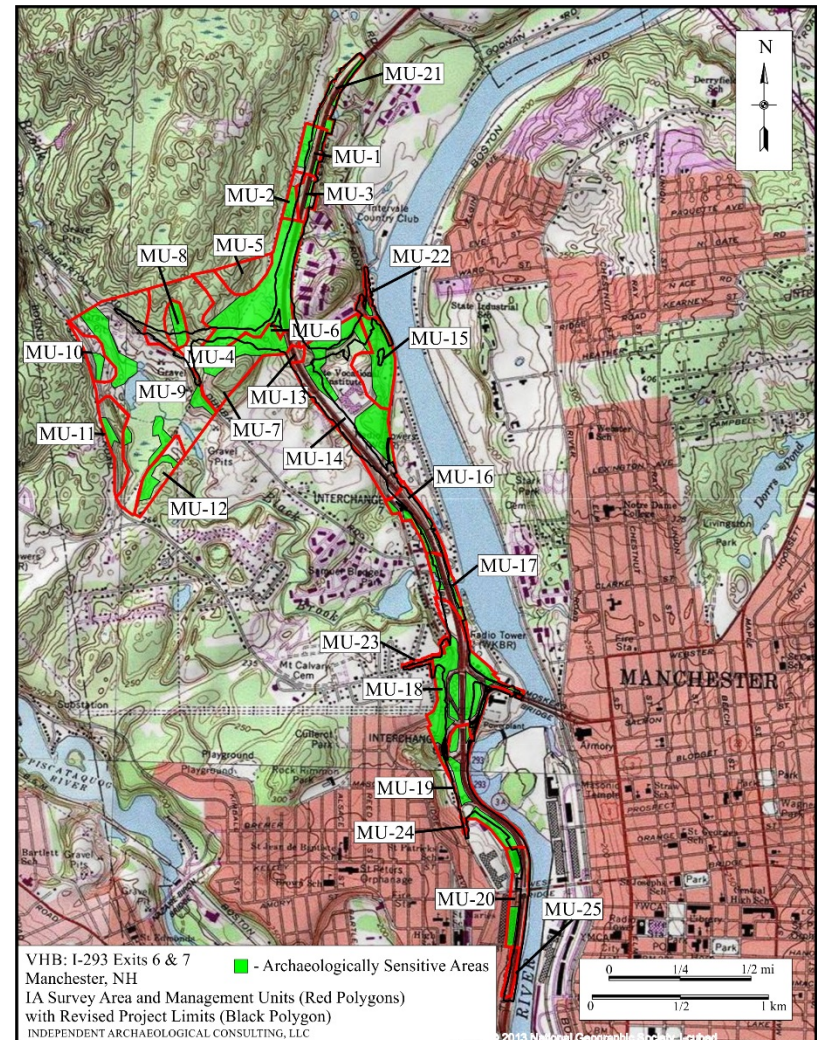


CULTURAL RESOURCES



CULTURAL RESOURCES

- Phase IA Sensitivity Assessment
- Phase IB Intensive Archaeological Investigation:
 - Field testing complete
 - 15 archaeological sites identified
 - Up to nine sites: Phase II Determination of Eligibility (Pre-Contact Resources)



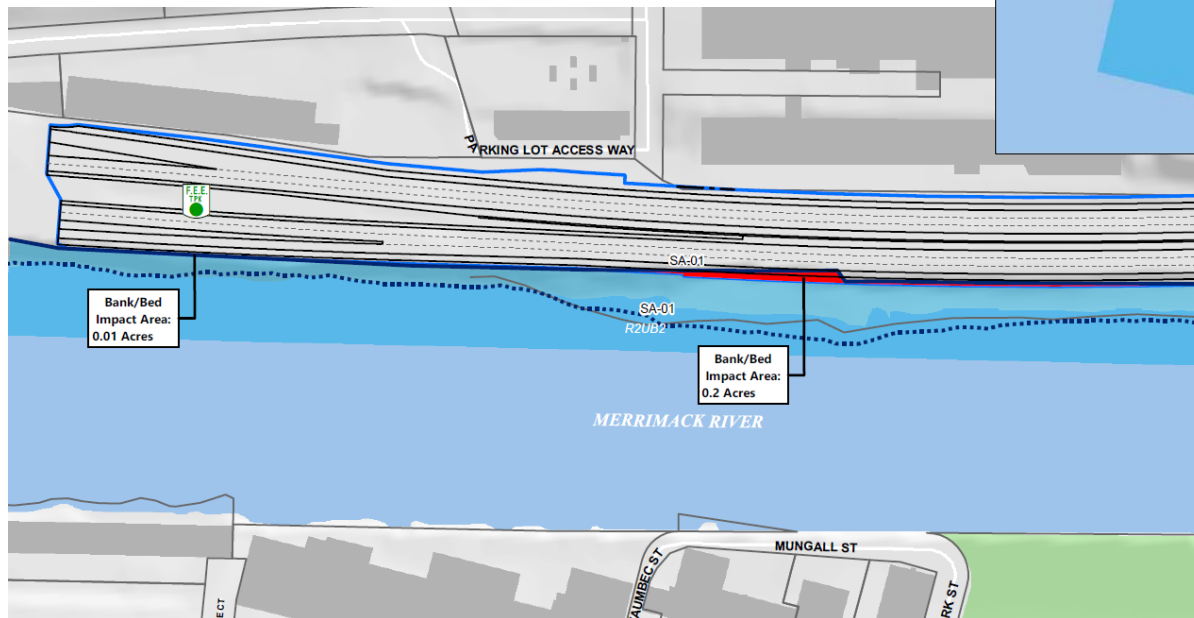
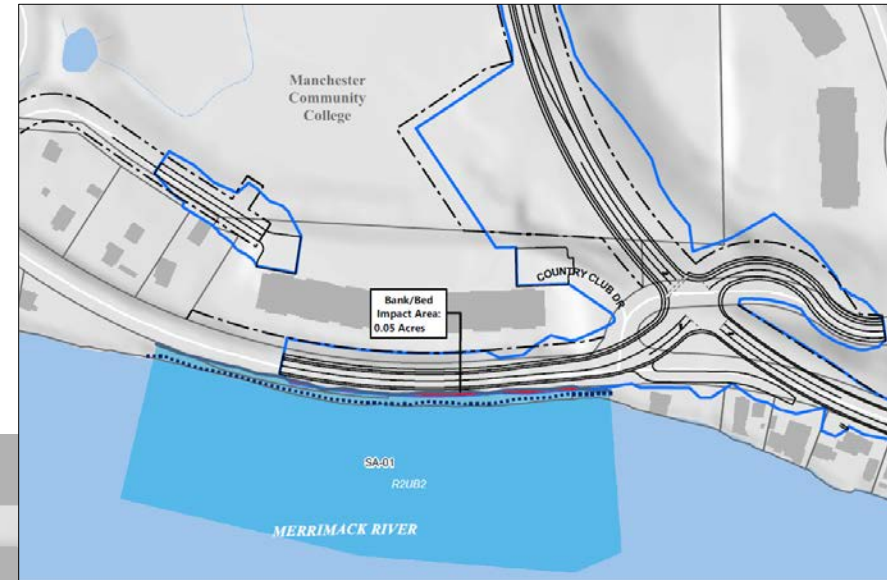
WETLAND IMPACTS

Summary

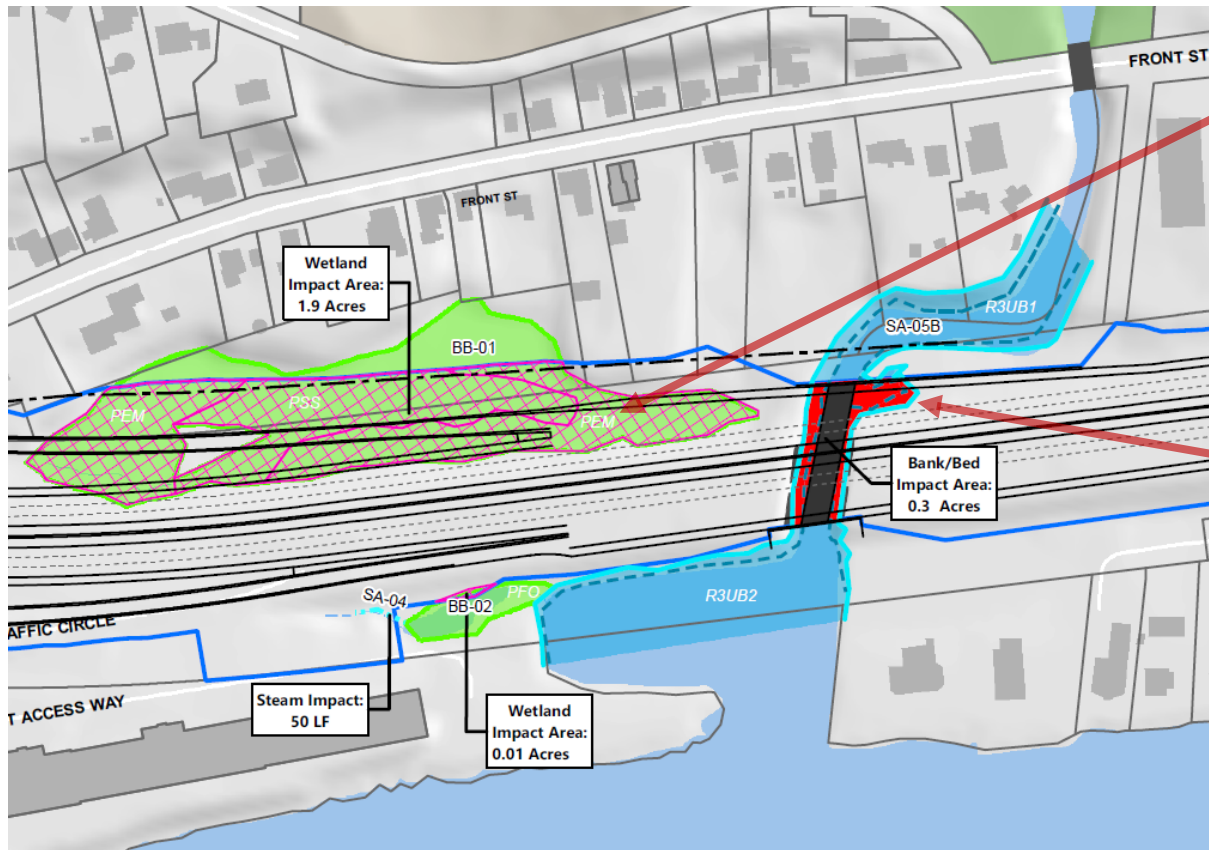
- Total Wetland/Stream (Bed/Bank) Impact: **~3.5 ac**
- Merrimack River Bank: **~0.2 ac/1,700 ft**
- Total Vernal Pool Impact: **~0.2 ac**
- Non-Jurisdictional Drainage Areas: **~0.5 ac**



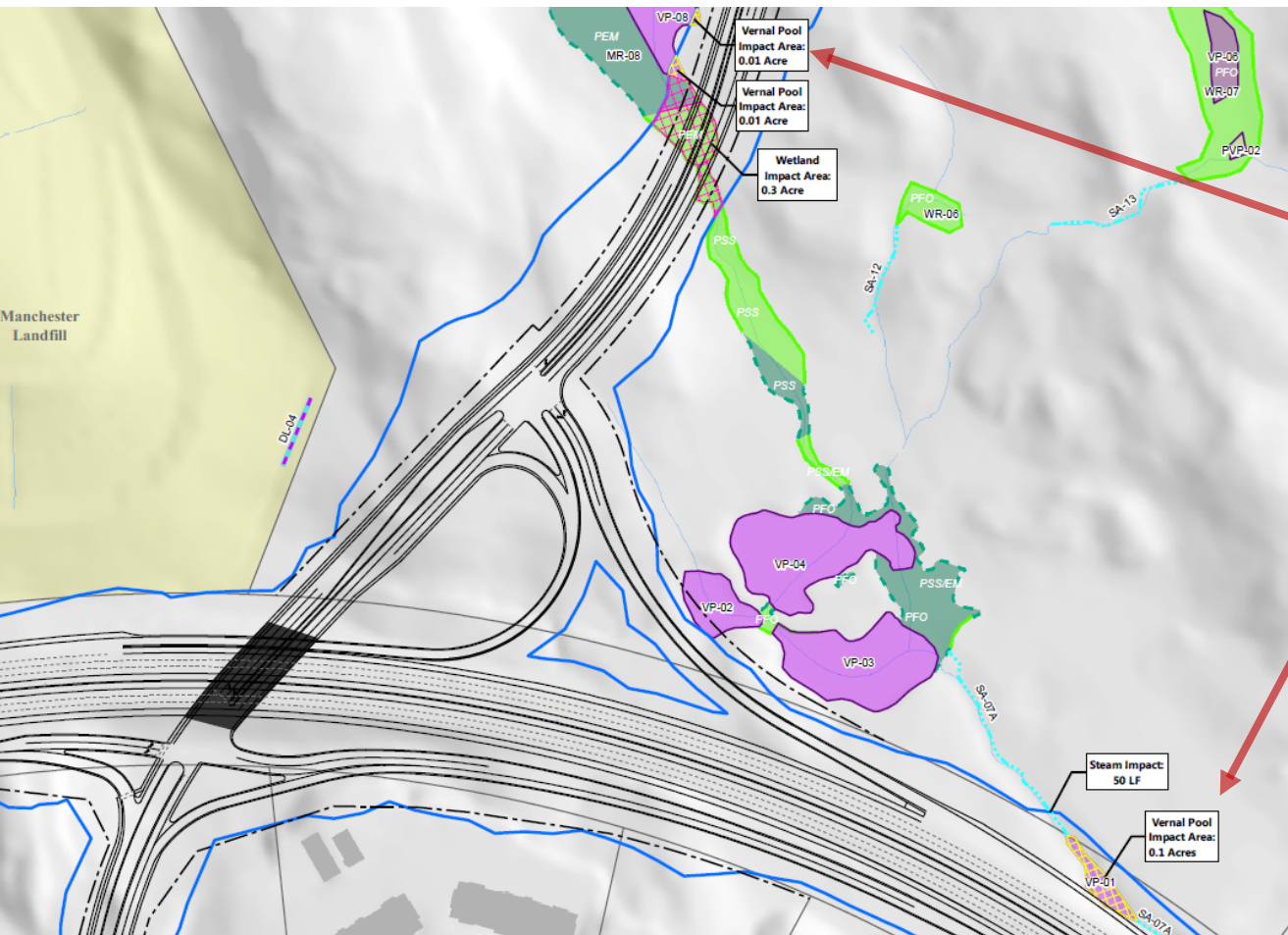
WETLAND IMPACTS



WETLAND IMPACTS



WETLAND IMPACTS



STORMWATER

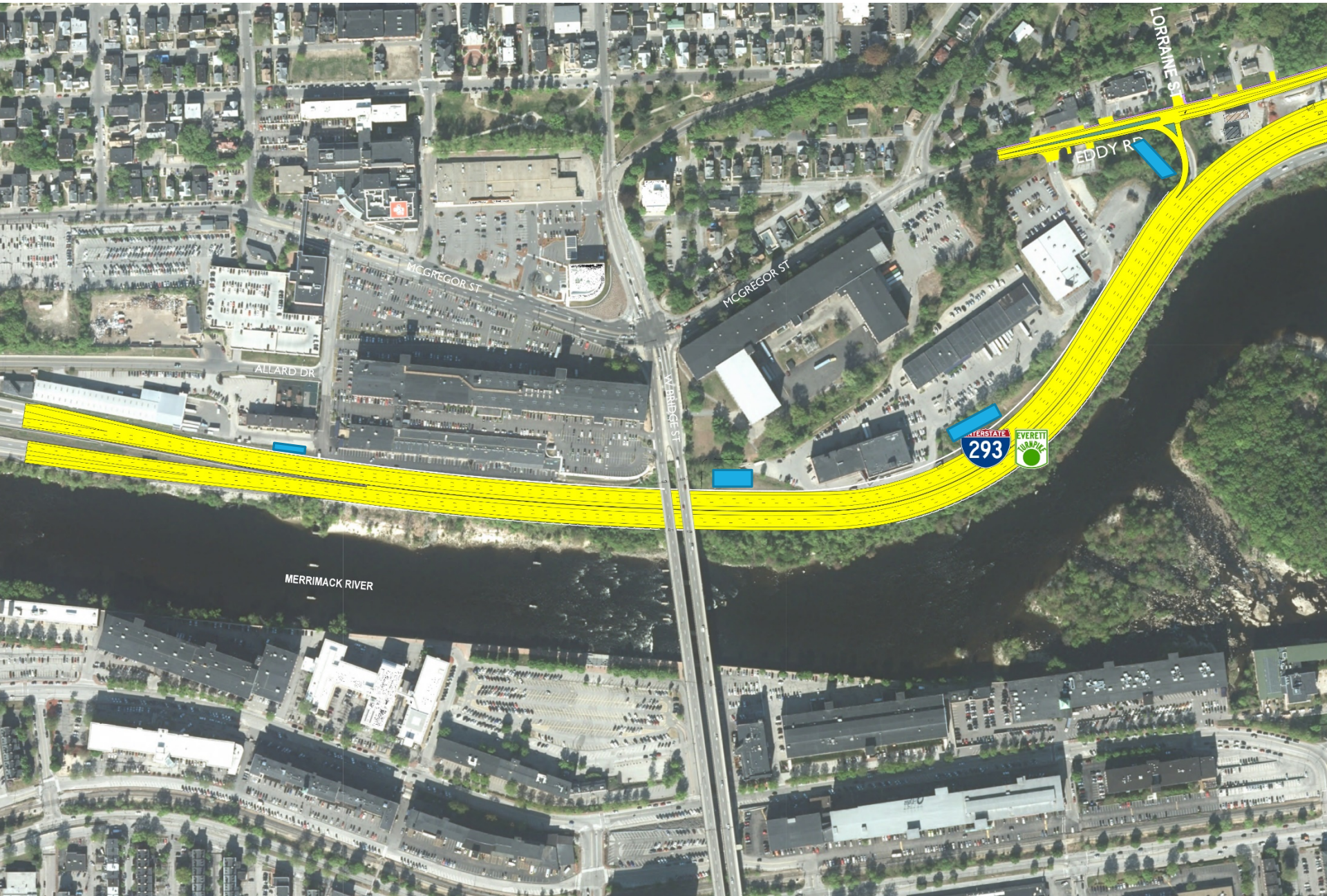
Drainage and Stormwater Management Systems

Up to 13 stormwater basins are proposed to be constructed. These basins include:

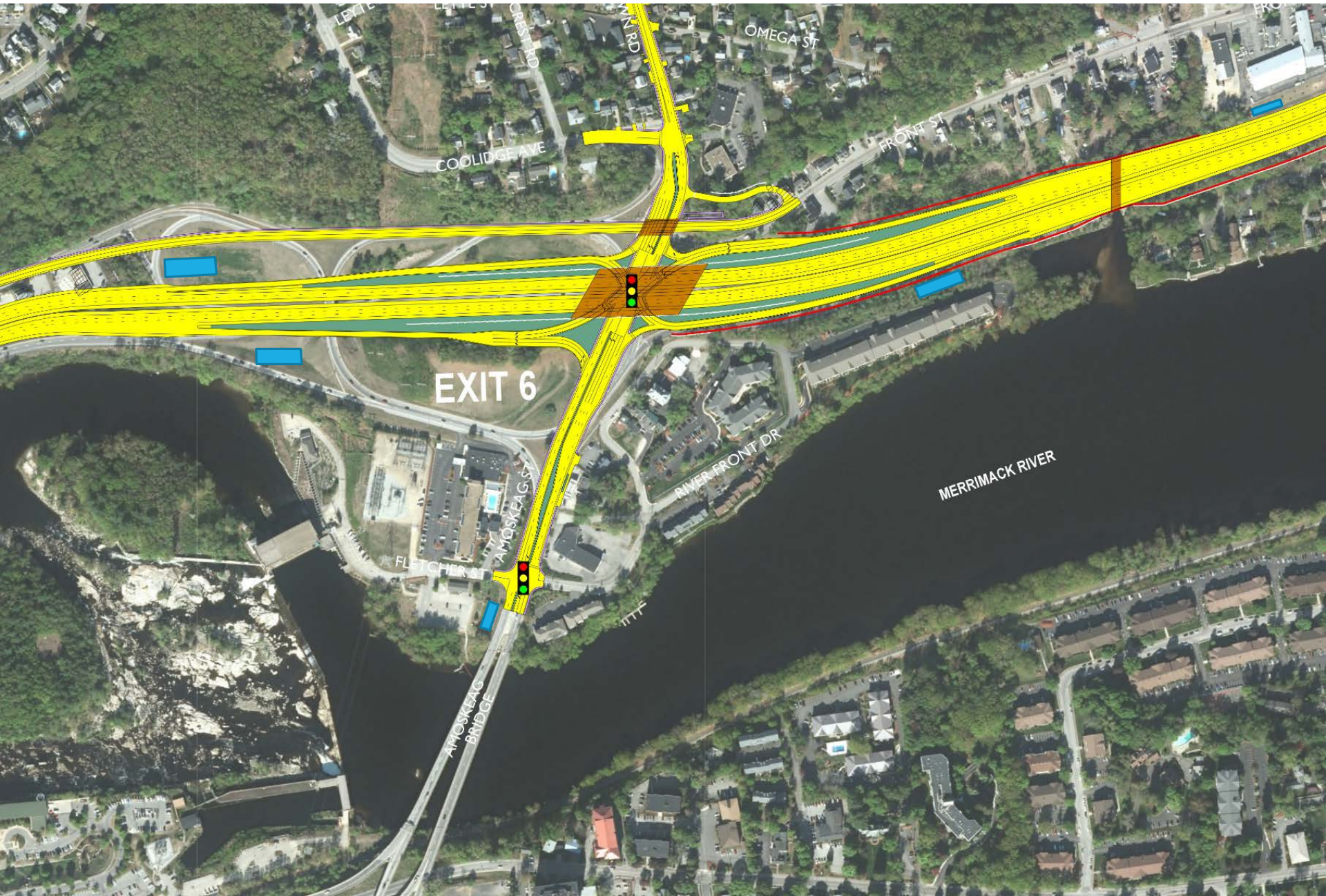
- Wet Extended Detention Basin
- Gravel Wetland
- Vegetated Swale (Treatment Swale)



I-293 Mainline – Stormwater Basins



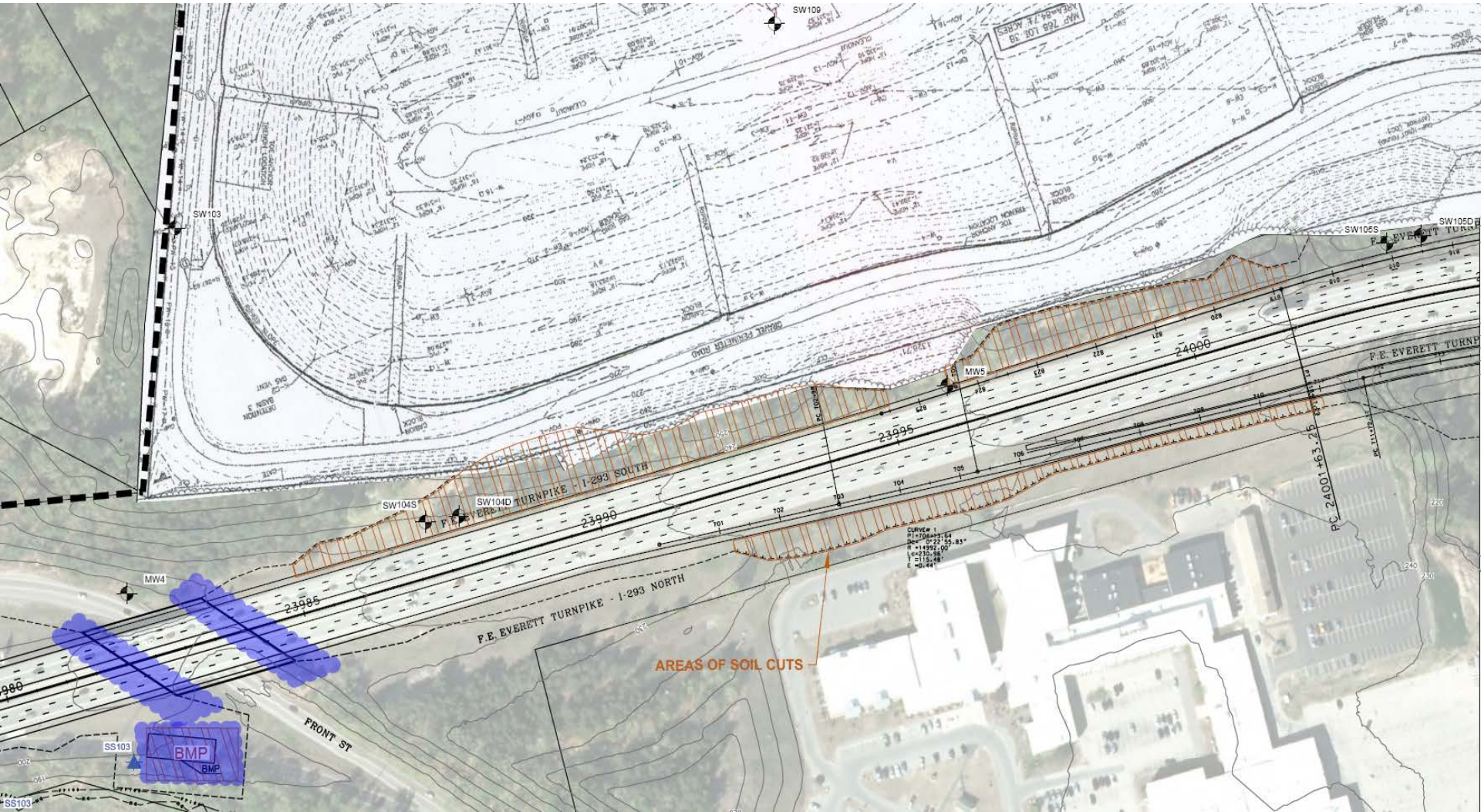
Exit 6 – Stormwater Basins



Exit 7



MANCHESTER LANDFILL





I-293 EXIT 6 & 7 (PART B)

Technical Advisory Committee (TAC)

January 30, 2019

New Hampshire
DOT
Department of Transportation

